



HSP | Pergola

- Powder coated black all aluminum frame and top, including slats
- 4" x 4" Square Aluminum Tubing
- 132 W x 72 D x 100 H
- Daybed Option has brackets configured to fit Heritage Collection Daybed

HCDB | Heritage Daybed

- Size: 87 W x 48 1/2 D x 28 H
- Seat Size: 74 W x 28 D
- Comes standard with (3) seat cushions in your choice of SUNBRELLA.com fabric.

POLYWOOD OPTIONS

- All items are available In:
- Standard Poly Colors
 - Bright Poly Colors - up-charge
 - Woodgrain Poly Colors - up-charge

FABRIC OPTIONS

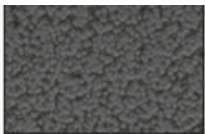
Unless otherwise specified, cushions are included with your product as shown in your choice of SUNBRELLA.com fabric. Daybed back cushions are an additional charge.

HSSF | Aluminum T- Swing Frame (2 Chair Size)

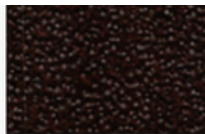
- Powder coated black welded metal frame
- All Aluminum 1 3/4" Steel Pipe
- Sofa/2 Chair Size: 108 W x 60 D x 90 H
- Lounge Size: 96 W x 60 D x 90 H
- Brackets configured to match chair set up



BLACK



GREY HAMMER



TEXTURED COPPER

Powder Coat Options

HCCSW | Heritage Chair Swing

- Size: 6 W x 34 D x 28
- Seat Size: 24 W x 22 D



HCAC | Heritage Armrest cushions -additional cost



HSSFT | Swing Frame Roof

- Powder coated black welded ALUMINUM frame
- Black Poly/Black Sunbrella Canvas Top
- Sofa/2 Chair Size: 115 W x 72 D x 84 H
- Lounge Size: 103W x 72 D x 84 H
- Adjustable Minimal Tilt



HANGER DETAILS

Heritage System *(Standard for Heritage Swing Line)*

- Pulley's - Powder coated black welded hook and bracket with stainless steel bolt.
- Pulley wheel is color matched to furniture color
- Ropes - 3/4" Polypropylene Rope with welded ends.
- Standard length is cut for 8' ceiling height.
- Custom lengths available upon request
- Cinch Brackets - Color matched poly cinch brackets lock seat angles firmly while still allowing for easy adjustment.

Daybed Brackets *(Standard on Daybeds)*

- Powder coated black welded bracket allows for smooth movement on daybeds.

Springs - Standard For All- For a smoother swing and more glide. Rated up to 1000# per swing

- Replacement Pulley Ropes Avail - Additional Cost
- Ropes may fade in the sun.
- Use sandpaper on them to refresh.
- Knots are burned at the end to stop fraying.
- Can raise the chairs by untying the knots (use a screw driver to wedge them loose), then re-tie at desired height



Heritage Swing Chairs on the Pergola Frame



Brooklyn Lounge Swing on T-Frame with Sun Shade



Heritage Day Bed with Brackets on the Pergola Frame



Brooklyn Lounge Swing on the Swing-Frame



Heritage Swing Chair



Heritage Lounge Swing



Heritage Sofa Swing



Heritage Daybed



Brooklyn Swing Chair



Brooklyn Lounge Swing



Brooklyn Lounge Swing with Center Console



Console Close Up

OTHER OPTIONS

We have Lounge and Sofa Swings also available in many different styles.

